

YSL-1, 2/2K Type Safety Valve(Low Lift Type)

The type YSL can be commonly used for various types of fluid (steam, vapor, liquid). It has a simple structure and is made of materials with a superb level of corrosion resistance. It is a safety valve that can be used for various purposes, such as a pressure vessel, safety device for various instruments and equipment, hot water boiler, water (including hot water) supplying equipment, cooling and heating facility, and safety device of pressure reducing valves.

Features

- Simple structure and outstanding performance.
- Disc and seat are free from leakage or transformation issues, thanks to a precision machining process.
- Test lever attached : Periodical performance inspections can be conducted.
- Approval from the Korea Occupational Safety and Health Agency (KOSHA).

Specifications

Type	YSL-1	YSL-2
Test lever	Yes	No
Applicable fluid	Steam, air	water
Set pressure range	0.034~1.0 MPa	
Fluid temperature	220°C below	80°C below
End connection	KS PT SCREW	
Materials	Body	GC200
	Disc, seat	STS304
Hydraulic test pressure	1.5MPa	

Dimensions

(mm)

Size Inlet x Outlet di X do	Seat diameter ds	Throat diameter dt	Throat area(mm ²) A	Lift L	Face to Face		Heigh(H)		Connection size		Blow off rate(kg/h)	Weigh (kg)	
					L1	L2	YSL-1	YSL-2	IN	OUT		YSL-1	YSL-2
15(1/2")X15(1/2")	15	14.3	18.8	18.8	40	41	127	112	1/2"	1/2"	18,25311	1.1	1
20(3/4")X20(3/4")	20	19.4	31.4	31.4	50	50	137	122	3/4"	3/4"	30,42184	1.8	1.7
25(1")X25(1")	25	24.7	55.0	54.9	55	60	162	148	1"	1"	53,23823	2.4	2.3
40(1 1/2")X40(1 1/2")	40	38.4	125.7	125.6	70	75	230	216	1 1/2"	1 1/2"	121,6874	5.7	5.5
50(2")X50(2")	50	49.5	204.2	204.1	80	80	245	245	2"	2"	197,742	8.6	9

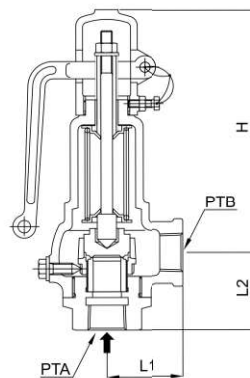


YSL-1 Type

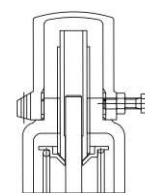


YSL-2 Type

Dimensional drawing



YSL-1 Type



YSL-2 Type