

# YBJ-4S, 4W Bellows Type Expansion Pipe Joint

©Mark inscription allowed product/ Korea register of shipping model approval

This is used to absorb the axial direction expansion and contraction of a pipeline that occurs according to temperature changes. Since it is an internal pressure type, it is buckling-free and ensures smooth expansion/contraction.

## Features

- Absorb the expansion & contraction of pipelines by temperature changes.
- Outstanding level of corrosion resistance : Parts materials come into contact with fluid are made of stainless steel.
- Outer tube has been used to prevent damage to the bellows from impact.

07



YBJ-4S Type



YBJ-4W Type

## Specifications

Type		YBJ-4S	YBJ-4W
Structure		Single type	Double type
Applicable fluid		Cold/hot water, Oil, Air, Steam	
Applicable pressure		Maximum 1,0MPa	
Fluid temperature		220°C below	
Expansion/contraction length		35mm	70mm
End connection		KS D 3507 Dimensions-based socket-welded type	
Materials	BELLOWS, Inner tube	STS	
	Outer tube	SPP	
	SOCKET	SPP	
Hydraulic test pressure		1,5MPa	

- ▶ The fixing bolt should be loosened after the hydro-pressure test.
- ▶ Custom made for steam.

## Dimensions

### >> YBJ-4S Type

(mm)

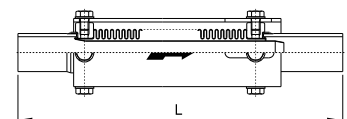
Size	L	Expansion/contraction length		Weight(kg)
		Expansion length	Contraction length	
25(1")	365	10	25	4,1
32(1¼")	365	10	25	4,1
40(1½")	365	10	25	5,2
50(2")	365	10	25	7,1
65(2½")	415	10	25	8,2
80(3")	415	10	25	10,3
100(4")	415	10	25	15,7

### >> YBJ-4W Type

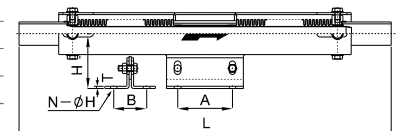
(mm)

Size	L	Expansion/contraction length		H	A	B	T	N-øH	Weight(kg)
		Expansion length	Contraction length						
25(1")	680	20	50	100	100	60	4	4-ø12	8,7
32(1¼")	680	20	50	120	100	70	4	4-ø12	10,0
40(1½")	680	20	50	120	100	70	4	4-ø12	11,9
50(2")	680	20	50	130	100	80	5	4-ø15	15,2
65(2½")	780	20	50	140	120	100	5	4-ø15	15,8
80(3")	780	20	50	150	120	110	5	4-ø15	24,3
100(4")	880	20	50	170	120	130	6	4-ø19	37,5

## Dimensions drawing



YBJ-4S Type



YBJ-4W Type